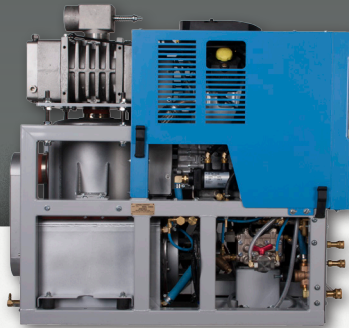


# DUAL WAND 35 HP 460

## MAXIMUM PERFORMANCE DUAL-WAND UNIT

The 460 truckmount's dual-wand performance powers through the toughest jobs – and through years of hard-core cleaning! Featuring a **35 HP high torque V-twin Kohler engine** and the **narrowest frame in the industry**, the 460 delivers the heat performance and durability you need to **get the job done quickly – and profitably.**



### FEATURES

- » **DELIVERS THE PRESSURE AND HEAT NEEDED FOR SUCCESSFUL CLEANING.**
- » **PREMIUM 35 HP INDUSTRIAL-GRADE ENGINE** is backed by the manufacturer's 3-year warranty.
- » **PATENTED THERMAL WELL** finned tube coil design with simplified thermostatic control.
- » **LAST-STEP CHEMICAL INJECTION** helps extend pump life.
- » **UNIQUE THROUGH-FRAME COOLING** channels air over the belt to extend belt life.



**PATENTED HEAT EXCHANGER**

|                            |  |
|----------------------------|--|
| <b>POWER PLANT</b>         | 35 HP Kohler CH980 V-twin air cooled gasoline engine operating at 2900 RPM   |
| <b>VACUUM PUMP</b>         | Gardner Denver Triflow 408 tri-lobe blower. Vacuum at 13 in. Hg and flows up to 455 CFM @ 3265 RPM.                    |
| <b>SOLUTION PUMP</b>       | General HTS2016S with an electric clutch producing up to 1500 PSI and 5 GPM at 1450 RPM. Last step chemical injection. |
| <b>WASTE TANK</b>          | 90 gal. marine grade aluminum<br>Optional: 120 gal. high capacity waste tank   |
| <b>CONSOLE (W × H × D)</b> | 22 × 41 × 46 in.   56 × 104 × 117 cm.  |

**SAPPHIRE CLEANING TRUCKMOUNTS**  
**INCLUDE EVERYTHING YOU NEED TO GET TO WORK:** vacuum hoses, solution lines, installation kit, operation manual, a double bend stainless steel carpet wand and more **FREE!**

See [www.sapphirescientific.com](http://www.sapphirescientific.com) for details.  
 Serviced by North America's largest dealer network.



SCAN TO FIND  
OUT MORE